



Hello artists!

If you'd like to exhibit your work...

Please send an email to art@hopinnswindon.co.uk with a couple of examples of your work, or a web link. We welcome the work of talented professional and semi-professional local artists; young, upcoming artists, as well as charity, therapeutic and youth groups. We aim to exhibit a variety of styles, media, subject matter etc, and will base invitations to exhibit on recent and scheduled future exhibitions and the qualities of your work.

About our exhibitions

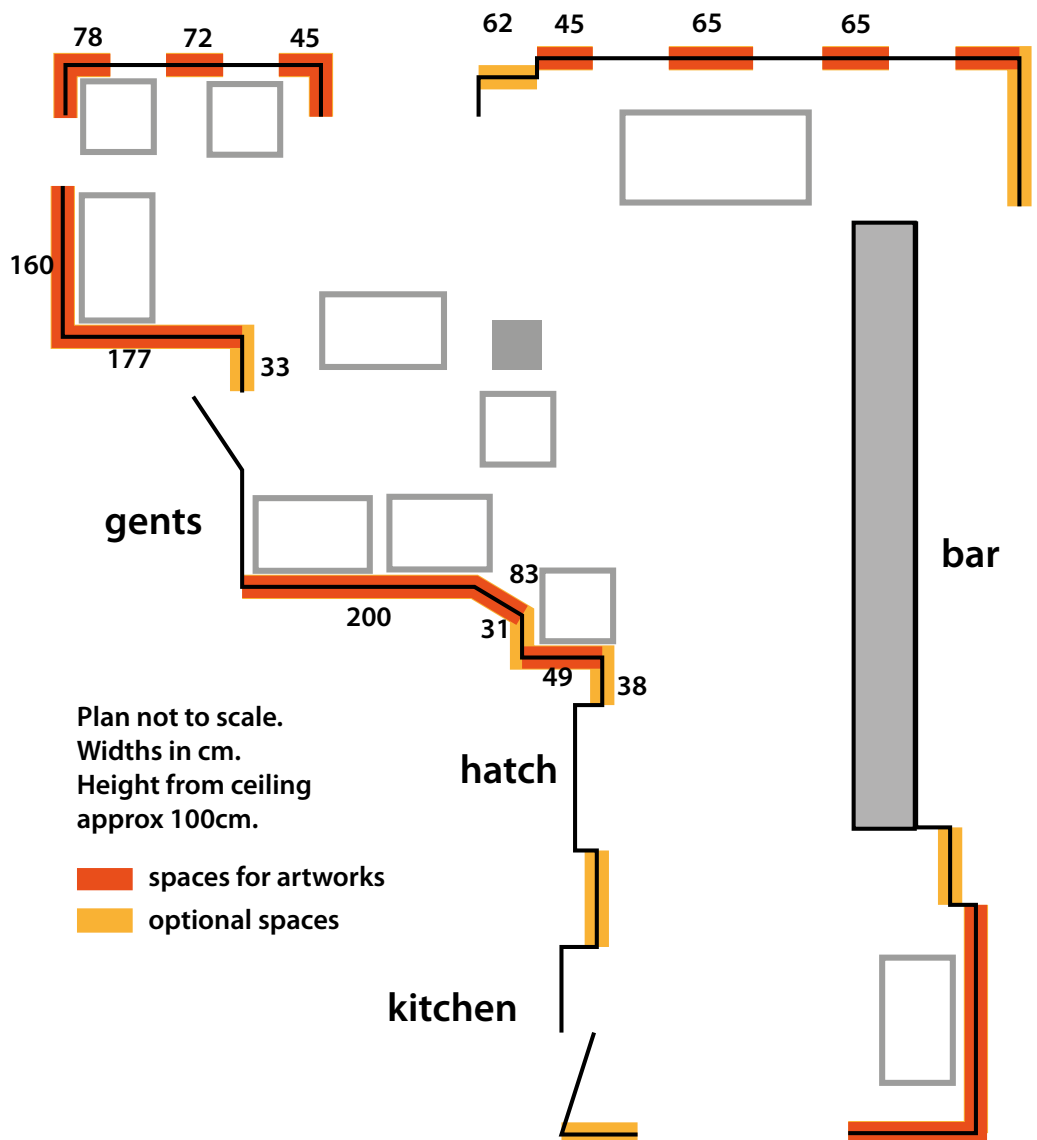
Exhibitions are for six weeks.

Artists do not pay to exhibit, and we don't ask for commission.

The exhibition space is the front part of the pub, from the front door to opposite the kitchen door (before the steps). The back of the pub is exhibition space for one of our staff members.

Please come to see the space and plan how you will hang your exhibition – too much empty space lessens the impact of the exhibition.

The exhibition space are the walls indicated in red. You can also use the yellow 'optional' walls. Fill the spaces effectively (e.g. don't hang one small artwork in a large wall space!).



If you get an exhibition slot...

You'll need to:

1. **Present your work well – framed or on canvas etc.**
2. **Hang and take down your work ready for the next artist.** Change overs are at 11 am on Sundays.
The pub opens at noon. Bring nails, hammer, Bluetak etc.
3. **Display a small label for each artwork with:**

your name,

title of the artwork (if it has one),

price (or 'not for sale'), your contact details,

any additional information such as 'limited edition', and media,

We will sell you work and allow customers to take it away on payment. If you want the customer to contact you to buy the piece, (or can create customised work etc) add this info . Our staff can't answer questions on your behalf so ensure customers can get in touch with you to make sales.

4. **Bring a labelled container for cash. We only take cash are able to take cash payment only.** We will try to let you know ASAP when an artwork has sold so that you have the opportunity to replace it.

5. **A couple of weeks before your exhibition, send an email to @hopinnswindon.co.uk with:**

one or two good quality photos to art

a name for your exhibition

some info (40–50 words) about you, your work, the exhibition.

your instagram (or Facebook details) and your web address if you have one

We'll design a poster and promote your exhibition with posters and Facebook/Instagram posts.

Please **promote your exhibition** on social media (tag us – Instagram and Facebook: **@hopinnswindon**) and, where possible, display a poster (for example at work, or in your window).

We do not take responsibility for any accidental damage to your work. It's a public space and staff are always present – up to you whether you take out insurance on your work.

Any questions, email art@hopinnswindon.co.uk